

PRULink Sustainable Equity Fund

All data is as of 13 January 2024 unless otherwise stated

Features of Fund

| | |
|--------------------------------|------------------------------------------------------------------------------------------------------------------------------------------------------------------------------------------------------------------------------------------------------------------------------------------------------------------------------------------------------------------------------------------------------------------------------------------------------------------------------------------------------------------------------------------------------------------------|
| Investment Objective | <p>PRULink Sustainable Equity Fund (“the Fund”) aims to focus mainly on investments with higher overall sustainability characteristics than the performance benchmark, while also seeks to provide capital appreciation and income. This is achieved by investing in foreign equities, equity-related securities, deposits, currencies, derivatives or any other financial instruments directly, and/or indirectly through the use of any funds such as investment-linked funds set up by PAMB, collective investment schemes and/or exchange traded funds.</p> |
| Investment Strategy & Approach | <p>The Fund seeks to invest primarily in investment funds [Target Fund(s)] to achieve the investment objective. The Target Fund(s) will be monitored to assess the performance, processes, styles and positioning. The allocation to, or the Target Fund(s) may change if it is deemed unsuitable to meet the Fund’s objectives.</p> <p><i>Note: Refer to additional disclosure for details of the Target Fund(s).</i></p> |
| Asset Allocation | <p>The Fund invests up to 100% of the Fund's Net Asset Value (“NAV”) in the Target Fund(s) determined by the Fund Manager. The balance of the Fund's NAV will be invested in liquid assets.</p> |
| Performance Benchmark | <p>The benchmark may vary based on the underlying Target Fund(s). At inception, the benchmark is</p> <p>MSCI AC World Index</p> <p><i>The benchmark is only a reference benchmark. For more information on benchmark kindly refer to www.msci.com</i></p> |
| Fund Manager | <p>Prudential Assurance Malaysia Berhad 198301012262 (107655-U)</p> |

Fees & Charges

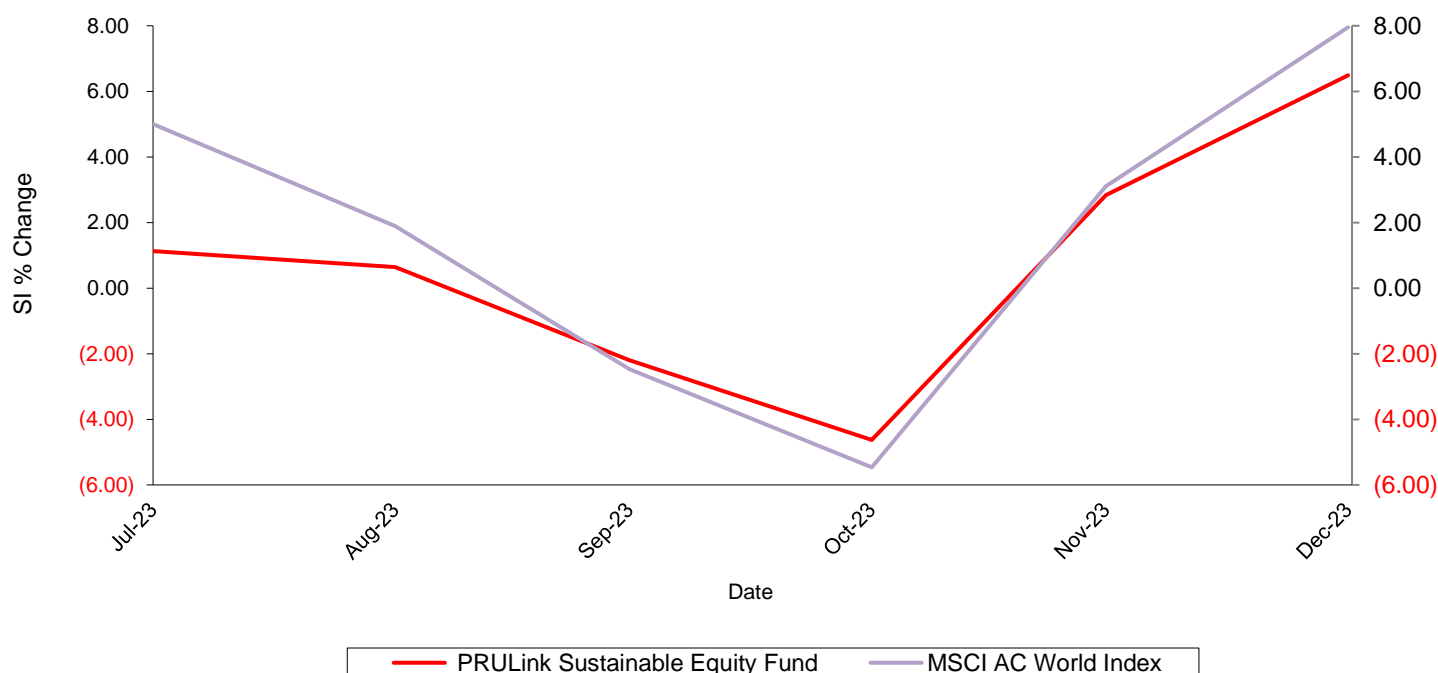
| | |
|------------------------|------------|
| Fund Management Charge | 1.50% p.a. |
| Other Charges, if any | Nil |

PRULink Sustainable Equity Fund

All data is as of 13 January 2024 unless otherwise stated

Fund Performance

PRULink Sustainable Equity Fund Vs. MSCI AC World Index



| Year | Actual Performance PRULink Sustainability Equity Fund | Benchmark MSCI AC World Index |
|------|----------------------------------------------------------|----------------------------------|
| 2023 | 6.49%* | 7.95%* |

*Fund Performance is from fund launch date until year end of the same year (non-annualised return).

Sources: Bloomberg, 31 December 2023

Notice: Past performance is not an indication of its future performance. This is strictly the performance of the investment/underlying funds, and not the returns earned on the actual premiums paid of the investment-linked insurance

Basis of calculation of past performance:

$$= \left(\frac{\text{Net Asset Value for Year } n}{\text{Net Asset Value for Year } n - 1} - 1 \right) \%$$

Additional disclosure for PRULink Sustainable Equity Fund

At the inception, the Fund will invest into Schroders International Selection Fund (ISF) - Global Sustainable Growth A Accumulation USD ("Target Fund") which is managed by Schroder Investment Management (Europe) S.A.

PRULink Sustainable Equity Fund

All data is as of 13 January 2024 unless otherwise stated

The Target Fund maintains a higher overall sustainability score than MSCI AC World (Net TR) index, based on the Target Fund investment manager's rating system. The sustainability score of the Target Fund is measured by SustainEx™, Schroders' proprietary tool that provides an estimate of the potential societal or environmental impact that an issuer may create.

The *MSCI AC World (Net TR)* index benchmark used is a reference benchmark (broad market index) against which the performance is compared. The Target Fund's investment universe is expected to overlap materially with the components of the reference benchmark. The investment manager invests on a discretionary basis and there are no restrictions on the extent to which the strategy's portfolio and performance may deviate from the reference benchmark. This reference benchmark does not take into account the environmental and/or social characteristics promoted by the Fund.

The Fund is actively managed and invests at least two-thirds of its assets in equity and equity related securities of companies worldwide. The Fund typically holds fewer than 50 companies. The Target Fund may also invest up to one-third of its assets directly or indirectly in other securities (including other asset classes), countries, regions, industries or currencies, investment funds, warrants and money market investments, and hold cash. The Target Fund may use derivatives with the aim of reducing risk or managing the fund more efficiently.

Sustainable Investment Strategy

The sustainable investment strategy used by the Investment Manager is as follows:

- The Target Fund is actively managed and invests at least two-thirds of its assets in equity and equity related securities of companies worldwide.
- The Target Fund typically holds fewer than 50 companies.
- The Target Fund maintains a higher overall sustainability score than the MSCI AC World (Net TR) index, based on the Investment Manager's rating system. The sustainability score of the Target Fund is measured by SustainEx™, Schroders' proprietary tool that provides an estimate of the potential societal or environmental impact that an issuer may create.
- The minimum proportion of the Target Fund's assets used to attain the environmental or social characteristics is equal to 70%. The Target Fund will invest at least 50% of its assets in sustainable investments. Within this, there is no commitment to invest a minimum proportion of the Target Fund's assets in sustainable investments with an environmental objective or in sustainable investments with a social objective. This means that the proportion of sustainable investments with an environmental objective and those with a social objective will vary over time. The Target Fund includes investments that are treated as neutral for sustainability purposes, such as cash and Money Market Investments and derivatives used with the aim of reducing risk (hedging) or managing the Target Fund more efficiently. It also includes investments that are not scored by Schroders' proprietary sustainability tool and so do not contribute towards the Target Fund's sustainability score.
- Exclusions
The Target Fund applies firm-wide exclusions which are similar as Prudential Group. For further details on the list of exclusions, please refer to the Target Fund's fund prospectus.
- The Target Fund invests in companies that have good governance practices, as determined by the Investment Manager's rating criteria.

PRULink Sustainable Equity Fund

All data is as of 13 January 2024 unless otherwise stated

The fund performance for the underlying Schroders International Selection Fund (ISF) - Global Sustainable Growth A Accumulation USD as at 31 December 2023 is as follows:

| Year | 2023 | 2022 | 2021 | 2020 | 2019 | 2018 | 2017 | 2016 | 2015 | 2014 |
|-----------------|--------|--------|-------|-------|-------|-------|-------|-------|------|-------|
| Net Performance | 22.43% | -17.9% | 19.3% | 27.5% | 31.0% | -3.3% | 28.8% | -0.7% | 1.5% | -0.5% |

Note: The above return is for the Target Fund A (Accumulation) share class which is denominated in USD.

Source: Schroder Investment Management as of 31 December 2023

Management fees may be charged at the Fund and/or Target Fund(s) level. Please note that you will be charged a maximum of 1.50% p.a., being the combined annual fund management charge at the Fund and Target Fund(s) levels.

Target Fund(s) with investment strategies to invest in Exchange Traded Funds ("ETF") or other Collective Investment Schemes may incur additional expenses at the Target Fund(s) level which is taken as part of the investment strategy considerations to deliver the fund performance.

Investment Risks for PRULink Sustainable Equity Fund

The Fund is subjected to investment risks including the possible loss of the principal amount invested. The value of the units may fall as well as rise. In addition, the Fund is subjected to specific risk including and not limiting to:

General Risks when Investing in the Fund

Market Risk

Market risk refers to potential losses that may arise from adverse changes in the market conditions. Market conditions are generally, affected by, amongst others, economic and political stability. If the market which the Fund invests in suffers a downturn or instability due to adverse economic or political conditions, this may adversely impact the market prices of the investments of the Fund.

Liquidity Risk

Liquidity risk refers to two scenarios. The first scenario is where an investment cannot be sold due to unavailability of a buyer for that investment. The second scenario is where the investment is thinly traded. Should the investments in the Target Fund(s) be thinly traded, this may cause the Fund to dispose the investment at an unfavorable price in the market and may adversely affect investor's investment. This risk may be mitigated through stringent security selection process.

Inflation Risk

This refers to the likelihood that an investor's investments do not keep pace with inflation, thus, resulting in the investor's decreasing purchasing power even though the investment in monetary terms may have increased.

Interest Rate Risk

Interest rate risk is a general risk affecting conventional funds. This is so even though conventional funds only invest in investments that are in accordance with the mandate. The reason for this is because a high level of interest rates will inevitably affect corporate profits and this will have an impact on the value of both equity and debt securities. This risk is crucial in a bond fund since a bond portfolio management depends on forecasting interest rate movements. Prices

PRULink Sustainable Equity Fund

All data is as of 13 January 2024 unless otherwise stated

of bonds move inversely to interest rate movements therefore as interest rates rise, the prices of bond decrease and vice versa. Furthermore, bonds with longer maturity and lower profit rates are more susceptible to interest rate movements.

Risk of Non-Compliance

This risk arises from non-compliance with laws, rules and regulations, prescribed practices and the management company's internal policies and procedures, for example, due to oversight by the management company. Such non-compliance may force the management company to sell down securities of the Fund at a loss to rectify the non-compliance and in turn may adversely affect the value of investors' investment in the Fund. To mitigate this risk, the Fund Manager has put in place internal controls to ensure its continuous compliance with laws, rules and regulations, prescribed practices and the Fund Manager's internal policies and procedures.

Concentration Risk

This is the risk of a fund focusing a greater portion of its assets in a smaller selection of investments. The fall in price of a particular equity and / or fixed income investment will have a greater impact on the funds and thus greater losses. This risk may be minimized by the manager conducting even more rigorous fundamental analysis before investing in each security.

Management Company Risk

The performance of the Fund depends on the experience, expertise and knowledge of the management company. Should there be lack of any of the above qualities by the management company, it may adversely affect the performance of the Fund.

Currency Risk

The Fund is denominated in MYR, while the Target Fund(s) may be denominated in other currencies. The performance of the Fund may be affected by movements in the exchange rate between the MYR and the Target Fund(s)'s denominated currency. Where applicable, a currency hedge or a currency hedged class of fund may be used to minimise currency risk.

Derivatives Risk

Derivatives may potentially be used to hedge against any risk that may be derived from investing in the Target Fund(s), such as, but not limited to, currency risk.

Fund Management of the Target Fund Risk

While the Fund Manager will exercise due skill and care in selecting the Target Fund, it does not have control over the management of the Target Fund and there is no guarantee that the investment objective of the Fund will be met. This may affect the value of the policyholders' investments in the Fund. The Target Fund may change its objective and become inconsistent with the objective of the Fund. In such instances, the Fund Manager will replace the Target Fund with another collective investment scheme which the Fund Manager considers to be more appropriate in meeting the objective of the Fund.

Sustainability Risk

The Fund has environmental and/or social characteristics. This means it may have limited exposure to some companies, industries or sectors and may forego certain investment opportunities, or dispose of certain holdings, that do not align

PRULink Sustainable Equity Fund

All data is as of 13 January 2024 unless otherwise stated

with its sustainability criteria. Therefore, the fund may underperform other funds that do not apply similar criteria. The fund may invest in companies that do not reflect the beliefs and values of any particular investor.

Exclusion Risk

The Fund does not have strict exclusion of companies that are exposed to ESG risk of below certain sustainability score than the performance benchmark.

Specific Risks when Investing in the Target Fund(s) or its Sub-Fund(s) (collectively to be known as “Target Fund(s)”) Security Risk

Adverse price movements of a particular security invested by the Target Fund(s) may adversely affect the Target Fund(s)'s net asset value. The Target Fund Manager(s) strives to mitigate the impact of a particular security risk through portfolio diversification, which will help spread the element of risk.

Fund Management of Target Fund(s) Risk

While the Fund Manager will exercise due skill and care in selecting the Target Fund(s), it does not have control over the management of the Target Fund(s) and there is no guarantee that the investment objectives will be met. This may result in policyholders suffering losses in their investments in the Target Fund(s).

The Target Fund(s) may change its objectives and become inconsistent with the objective of the Fund. In such instances, the Fund Manager will replace the Target Fund(s) with another collective investment scheme which the Fund Manager considers to be more appropriate in meeting the objective of the Fund.

Errors in Calculation of the Net Asset Value of the Target Fund(s)'s Risk

There is a possibility there are errors in calculation of the net asset value of the Target Fund(s). In the event such errors occur, the net asset value of the Target Fund(s) will be affected hence, the Target Fund(s) will comply with the rules set forth in the relevant regulatory provisions applicable to the Target Fund(s). Compensation, if any, paid by the Target Fund(s) (subject to the laws of the jurisdiction in which such Target Fund(s) is domiciled), will be credited to the Fund as and when compensation is received.

In view of the foregoing, policyholders must be aware that there are circumstances where neither the Target Fund(s) nor the Fund Manager will be bound to compensate final beneficial owners.

Liquidity Risk

Liquidity risk here refers to two scenarios. The first scenario is where the allocated liquidity of the Target Fund(s) is insufficient to meet redemption needs. The second scenario is where the Target Fund(s) is thinly traded. Should the investments in the Target Fund(s) be thinly traded, this may cause the Target Fund(s) to dispose the investment at an unfavorable price in the market and may adversely affect investors' investment. This risk may be mitigated through stringent security selection process.

Countries or Foreign Securities Risk

This risk is associated with investments in securities listed or domiciled in countries other than the country of domicile. Any changes in the economic fundamentals, social and political stability, uncertainty or changes in countries' official currencies, currency movements and foreign investments policies in these countries may increase the volatility in asset values, liquidity and default risk which may have an impact on the prices of the securities that the Target Fund(s) invests in and consequently may affect the net asset value of the Target Fund(s). Investments in certain markets may be

PRULink Sustainable Equity Fund

All data is as of 13 January 2024 unless otherwise stated

restricted or controlled. In some countries, direct investments in securities may be prohibited and restricted due to regulatory requirements. These limitations may increase transaction costs and adversely affect a security's liquidity and the price in connection with the security. The Target Fund Manager(s) will monitor and observe the developments in these countries where assets of the Target Fund(s) are allocated. In addition, the Target Fund Manager(s) will also employ a systematic investment process, which includes regular review, to manage and mitigate this risk.

Currency Risk

The Target Fund(s)'s underlying investments may be denominated in their local currency, which may differ from the Target Fund(s)'s currency of denomination. The performance of the Target Fund(s) may be affected by movements in the exchange rate between the local currency of its underlying investments and the Target Fund(s)'s denominated currency.

Charges to Capital Risk

The Target Fund(s)'s charges and expenses are taken from the capital, in whole or in part, resulting in possible constraint of capital growth.

Sustainability Risk

The Fund has environmental and/or social characteristics. This means it may have limited exposure to some companies, industries or sectors and may forego certain investment opportunities, or dispose of certain holdings, that do not align with its sustainability criteria. Therefore, the fund may underperform other funds that do not apply similar criteria. The fund may invest in companies that do not reflect the beliefs and values of any particular investor.

Higher Volatility Risk

The price of this fund may be volatile as it may take higher risks in search of higher rewards and sustainability characteristics.

Restrictions on Foreign Investment

Some countries prohibit or impose substantial restrictions on investments by foreign entities. There may also be instances where a purchase order subsequently fails because the permissible allocation to foreign investors has been filled, depriving the Target Fund(s) of the ability to make its desired investment at the time.

Derivatives Risk

The Target Fund Manager(s) may invest in derivatives which will be subject to risks. While the judicious use of derivatives by professional investment managers can be beneficial, derivatives involve risks different from, and, in some cases, greater than, the risks presented by more traditional securities investments. Some of the risks associated with derivatives are market risk, management risk, credit risk, liquidity risk and leverage risk. Investments in derivatives may require the deposit or initial margin and additional margin on short notice if the market moves against the investment positions. If no provision is made for the required margin within the prescribed time, the investment may be liquidated at a loss. Therefore, it is essential that such investments in derivatives are monitored closely.

The Target Fund Manager(s) has the necessary controls for investments in derivatives and have in place systems to monitor the derivative positions for the Target Fund(s). The Target Fund Manager(s) does not intend to use derivatives transactions for speculation or leverage but may use them for efficient portfolio management and/or risk management. Currency risk is simply one of the market risks which the fund will be exposed to and can be hedged using derivatives such as FX forwards/futures. Often the underlying currency risk may be taken on as a result of buying an underlying

PRULink Sustainable Equity Fund

All data is as of 13 January 2024 unless otherwise stated

equity or bond. If the Target Fund Manager(s) does not want to also take the currency risk associated with these underlying assets, the Target Fund(s) may use Forward Foreign Exchange contracts to hedge any currency risk derived from holdings of non-base currency positions. Essentially this use of currency forwards is to hedge currency risk in the Target Fund(s).

The above should not be considered to be an exhausted list of the risks which potential investors should consider before investing in the Fund. Potential investors should be aware that an investment in the Fund may be exposed to other risks of exceptional nature from time to time.

Risk Management

Forecasting Risk

Potential risks are taken into consideration in the process of sector allocation and stock selection based on analysis on various key factors such as economic conditions, liquidity, qualitative and quantitative aspects of the securities.

System Control

Risk parameters are set internally for each fund, depending on client's risk profile. These risk parameters include limits of issuer bet, group issuer, sector rating and issue size of the securities held in the portfolio.

A front-end office system is in place to monitor portfolio risks, serving as an auto filter for any limitations or breaches.

PRULink Sustainable Equity Fund

All data is as of 13 January 2024 unless otherwise stated

Other Info

- Target Market

This Fund is suitable for policyholders who:-

- Are seeking capital appreciation and income over medium to long-term investment horizon.
- Have high risk tolerance.

- Basis & Frequency of unit Valuation

- Unit pricing is done daily.
- The Unit Price of this Fund on any Valuation Date shall be equal to the fund value divided by the number of units in issue on Valuation Date.
- The Fund Value is the value of all the assets of a particular PRULink Global Fund after the deduction of expenses for managing, acquiring, maintaining and valuing the assets of that fund, tax or other statutory levy incurred by Prudential Assurance Malaysia Berhad (“Prudential”) on investment income or capital gains on the assets of the Fund and any accrued or anticipated income.
- Prudential shall value the various PRULink Global Funds at the close of each business day (Valuation Date). However, as the value of the PRULink Global Funds’ investments in various shares, fixed interest securities and money market instruments at the close of a particular Valuation Date will only be known a business day later, the determination by Prudential of the Unit Price of a PRULink Global Fund in respect of a particular Valuation Date shall only be conducted and made known to the policyholders 2 business days later (T + 2).
- To recoup the cost of acquiring and disposing of assets, a transaction cost adjustment may be made to the fund value to recover any amount which this Fund had already paid or reasonably expects to pay for the creation or cancellation of units.

- Exceptional circumstances

- Prudential shall not be bound to redeem and convert on any Valuation Day more than 10% of any PRULink Global Fund outstanding on such Valuation Day.
- Prudential reserves the right in exceptional circumstances (for example, when there is an unusually high volume of sale of investments within a short period) to defer the switching or withdrawal of Units and the surrender of the policy for a period not exceeding six (6) months from the date of application.
- Prudential may suspend unit pricing and policy transaction if any of the exchanges in which the fund is invested is temporarily suspended for trading. In such event, notice for suspension may be published and may be communicated to the policyholders upon any request for top-up, switching, redemption or withdrawal to/from any such PRULink Global Fund.

The list of exceptional circumstances above are not exhaustive, please refer to your policy document for further details.